

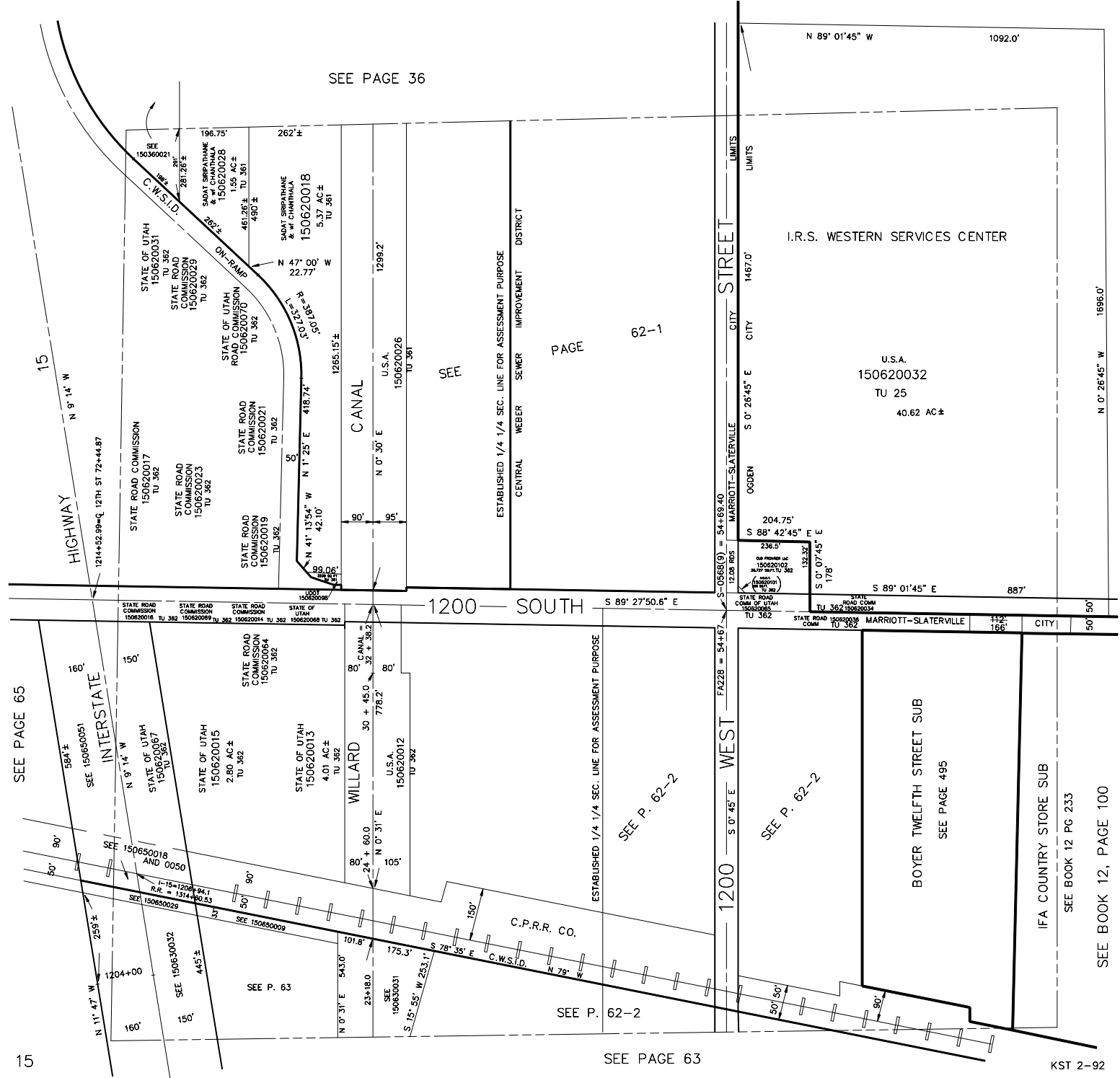
NE 1/4
SECTION 24, T.6N., R.2W., S.L.B. & M.

IN MARRIOTT-SLATERVILLE CITY, OGDEN CITY & WEBER COUNTY

TAXING UNITS: 25, 361, 362,

SCALE 1" = 200'

SEE PAGE 36



SEE PAGE 65

SEE P. 62-2

SEE P. 62-2

SEE P. 63

SEE P. 62-2

SEE PAGE 63

SEE BOOK 12 PG 233

SEE BOOK 12, PAGE 100

KST 2-92

15